

ARC OXFORD BUILDING 8100

OX4 2HW

ARC.

BUILDING 8100 AT A GLANCE

- Lab enabled workspace
- New ceiling and LED lighting with sensor controls
- New WC's and shower facilities
- New atrium finishes
- New comfort cooling
- Electric Vehicle Chargers



INTRODUCTION

ARC Oxford is home to some of the world's most impactful science and innovation organisations. At the heart of the city's world-leading innovation ecosystem — an integral part of a powerful knowledge economy. Discover offices, co-working, fitted labs and dedicated manufacturing facilities in Oxford city centre on the doorstep of Oxford University and 3 miles from John Radcliffe Hospital.

INTRODUCTION



ARC Oxford is set to grow. 750,000 sq ft of brand new science-ready space — offices, labs, cleanrooms and cutting-edge R&D facilities — will soon evolve the cluster into a world-class environment for science and innovation. It's an investment in ARC's future, Oxford's continued position as a global centre of invention, and the UK's ambition to become a science superpower.

INTRODUCTION

EASILY CONECTED



3 miles
Oxford Train Station

1 hour
London Paddington

2.3 miles
High Street

8 miles
M40 Junction 8/9

50 minutes
London Heathrow

2.4 miles
Headington Hospitals



LIFE ON CAMPUS

- | | | | | | |
|----------------------------|----|-------------------|----|----------------------------------|----|
| The Oxford Factory & Works | 01 | Next | 05 | Children's Day Nursery | 09 |
| The Market Place | 02 | Boots | 06 | Longwall Restaurant | 10 |
| Tesco | 03 | Petrol Station | 07 | David Lloyd Racket & Health Club | 11 |
| M&S | 04 | Premier Inn Hotel | 08 | Templars Square Shopping Centre | 12 |



BUILDING SPECIFICATION AND FLOORPLANS

Laboratory

Building 8100 will provide the highest quality lab-enabled contemporary workspace, measuring 1593.65 sq m (17,154 sq ft) (subject to measurement on completion) and set over two floors with 73 car parking spaces. The building will be extensively refurbished and can be delivered to either a shell or Cat A specification or alternatively fully fitted laboratory space.

Available Summer 2023.

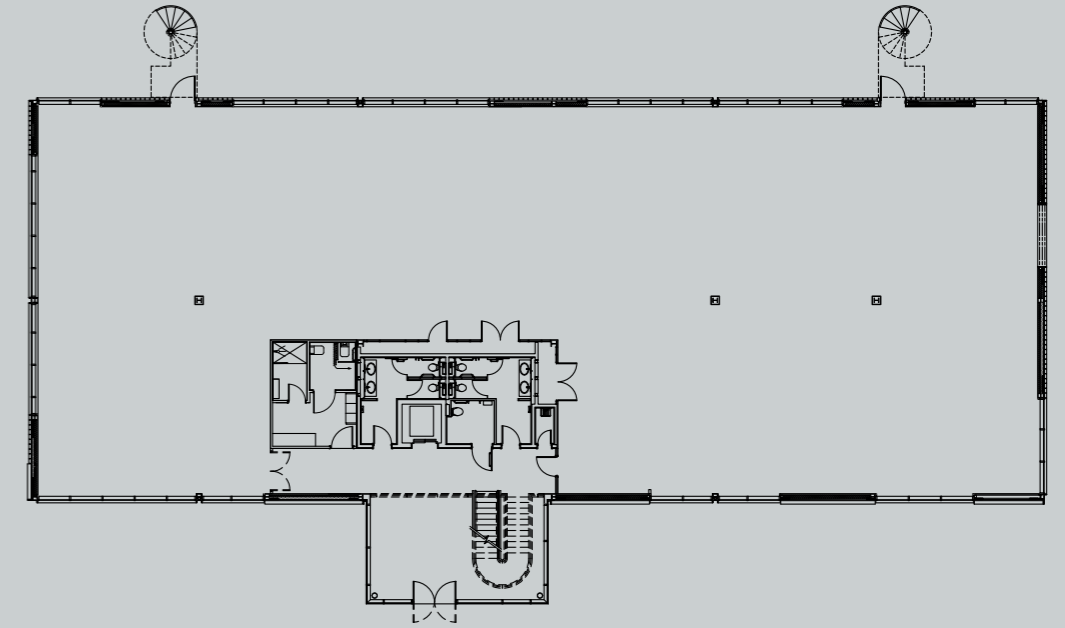
EPC available on completion of refurbishment.

Specification

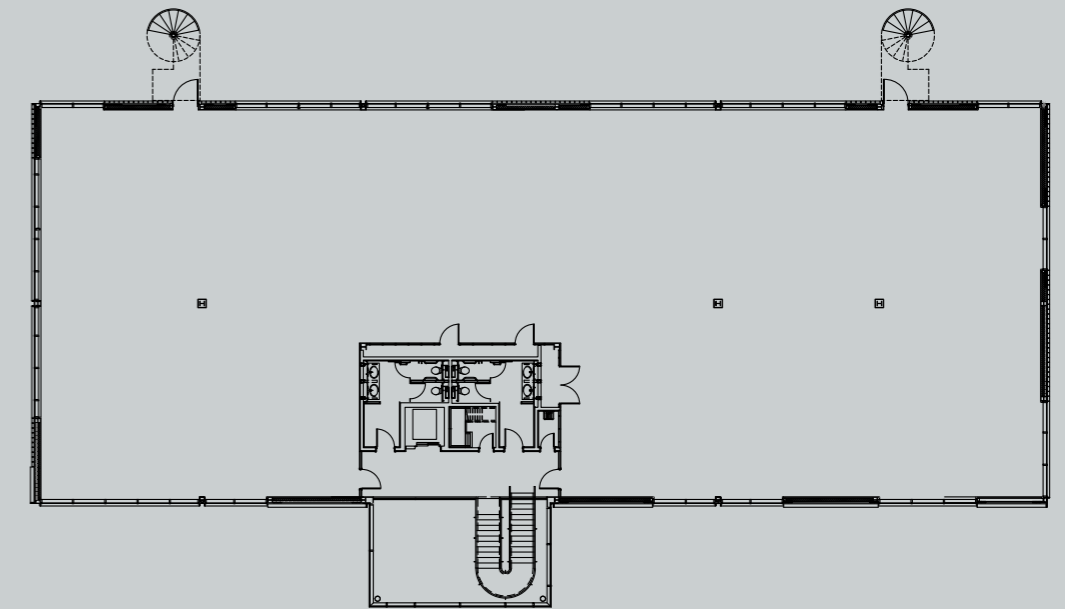
- Lab enabled workspace
- New ceiling and LED lighting with sensor controls
- New WC's and shower facilities
- New atrium finishes
- New comfort cooling
- Electric Vehicle Chargers



GROUND FLOOR



FIRST FLOOR



OXFORD ARC LIFE



Our community portal is available on your desktop or mobile app, bringing daily events, services, competitions to you and your colleagues. Whether you want to join us at a summer party, book a yoga class or book space in our business lounge – it is all here for you at Oxford ARC Life.



OXFORD WORKS



Oxford Works
Come and meet our Park Team at the Oxford Works, where you can hire a desk for an hour, a day or longer. With inspiring lounge space, phone booths and meeting rooms, it is the perfect work space that provides a refreshing alternative. There is also a fully equipped seminar theatre, all dedicated for our customers on Campus.



CAMPUS COMMUNITY



The Oxford Factory

At the Oxford Factory you can grab a coffee, hold an informal meeting or treat yourself to freshly baked pizza and other freshly cooked meals. Our contemporary restaurant serves the very best locally produced food and drink and can provide corporate catering to our seminar spaces or your workspace.

The Market Place

A vibrant social meeting place to grab a coffee at the Oxford Workshop, take time out to play some table tennis and enjoy the outdoor environment, relaxing in a deckchair on the lawns. For a hot chocolate in the winter sun or a bbq party in the summer, you can enjoy the Market Place all year round.



OCCUPIERS

AC Nielsen

Accession Therapeutics

ARGC

Animal Dynamics

Audi Oxford

Blackberry Clinic

Bright Horizons

British Gas

Cancer Research

Cluttons

Evox Therapeutics

Exact Sciences

Freeths

GRE

Harley Davidson

Ivy Farm

Jazz Pharmaceutical

NHS

Oxbotica

Oxfam

Oxford Biodynamics

Oxford Biomedica

Oxford County Council

Oxford Fertility

Oxford Management

Pennington Manches

Perspectum

Pure Offices

Royal Mail

Spybiotech

TI Automotive

Ultromics

Wiley



TESTIMONIALS

"It's been a great experience working with Arlington to accommodate Perspectum's Oxford based staff into this newly renovated and modern space. We are looking forward to moving in so that our staff can benefit from all the Park has to offer."

Perspectum Diagnostics

"Our rapidly expanding business needed to acquire fully fitted lab space within a very short timeframe. The Arlington team at ARC Oxford stepped up to this challenge, finishing on time and to a very high standard – we are delighted with the result."

Evox Therapeutics

"ARC Oxford is already home to our manufacturing facility known as Oxbox, which is in operation for our viral vector manufacturing activities and also supporting the manufacturing of a COVID-19 vaccine candidate. In March 2020, as our activities and workforce expanded, we took the decision to relocate our corporate headquarters team from our existing HQ to a new office location on the Park. Arlington have helpfully accommodated all of our commercial requirements with the new office and we are delighted with the quality of the building and the wider environment."

Oxford BioMedica

DEVELOPER

ARC

David Williams

M: +44 (0)7443 887 500

E: david.williams@arcgroup.io

Dan Williams

M: +44 (0)1183 703065

E: dan.williams@arcgroup.io

www.arcgroup.io

Misrepresentation Act

Advanced Research Clusters Ltd or JLL or CBRE or Bidwells give notice that these property particulars are provided as a general outline for guidance only. Intending purchasers or tenants should not rely on them as statements or representations of fact, but must satisfy themselves by inspection or otherwise as to their accuracy. As such, it does not constitute or form part of a contract. No person in the employ of Advanced Research Clusters Ltd or JLL or CBRE or Bidwells as representing agents of the property displayed has the authority to make or give any representation or warranty in relation to the property. Unless otherwise stated, all rents and prices quoted in these property particulars are exclusive of VAT which may be payable in addition to the amount quoted. Subject to contract. June 2022

CONTACT

LETTING AGENTS

JLL

Paddy Shipp

T: +44 (0)207 087 5357

E: Paddy.Shipp@eu.jll.com

Bridget Partridge

T: +44 (0)207 399 5349

E: Bridget.Partridge@eu.jll.com

jll.co.uk

CBRE

Richard Venables

T: +44 (0)1865 848488

E: richard.venables@cbre.com

Kevin Wood

T: +44 (0)790 058 4150

E: kevin.wood@cbre.com

Charlotte Reaney

T: +44 (0)7841 68442

E: charlotte.reaney@cbre.com

cbre.com

Bidwells

Duncan May

M: +44 (0)7879 883886

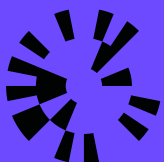
E: duncan.may@bidwells.co.uk

Rob Beatson

M: +44 (0)7976 590996

E: robert.beatson@bidwells.co.uk

www.bidwells.co.uk



**ARC
Oxford**